



Wallbrand™
Electric Branding Tools
Hand-held Model, 125 watts



Model WB125, 125 Watts, 120 or 220 VAC

Applications

For use where lower branding temperatures are needed. It is a very economical tool suitable for low volume branding of many 'softer' materials such as leather, some rubber, plastics, and soft woods.

This tool is not recommended for prolonged repetitive use or production line applications as its heat regenerating capability is limited for such uses.

OPTIONS

1. Branding Heads, see below and page 6.
2. Temperature Regulator, page 3.

Performance Features

- **Ceramic insulated, nickel - chrome heating element** is effective and economical
- **Branding heads** are engraved solid brass plates and are replaceable and interchangeable
- **3-wire grounded cordset** 4.5' long, protects against electric shock.
- **Positive grip, heat resistant handle** for comfort and ease of handling.

Tool Specifications

Model No.	WB125
Voltage	120 or 220 VAC
Power Cord	3-conductor, 4.5 ft. long
Heating Element	Nickel-chrome
Element Insulator	Ceramic
Shaft	Plated & Stainless Steel
Handle	Turned Hardwood

Branding Head Options

LOGO brands are engraved on brass heads, .040 to .060 inches deep depending on the complexity of the design.

CUSTOM brands are engraved on brass heads, .040 to .060 inches deep depending on the size of letters and message.

Refer to Page 6 for Branding Head and Temperature Data



LOGO brand

A **LOGO brand** authentically reproduces a logo, signature, emblem or other personalized artwork to scale. It is made from customer supplied art work and can be reproduced to fit on the branding head.

- NOTES
- Specify the head size wanted (standard sizes only), page 6.
 - A more detailed, intricate logo should be reproduced as large as possible to ensure best possible results.
 - A **LOGO brand** reproduces the artwork supplied. Therefore, sharp, clearly defined artwork is required for best results.

CUSTOM brand

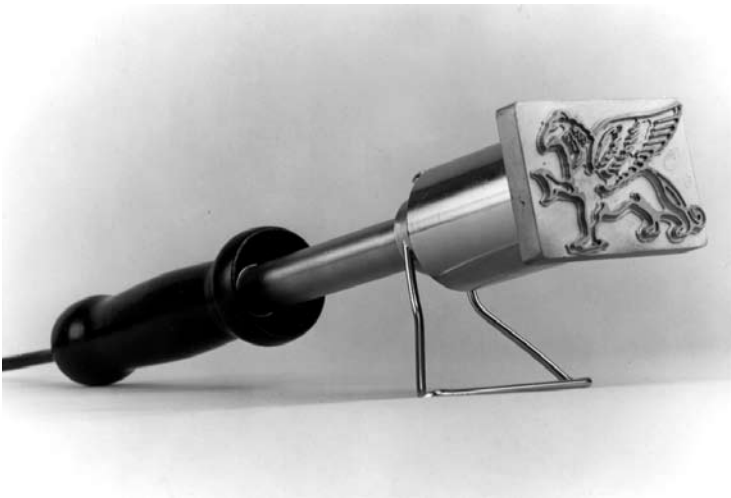
A **CUSTOM brand** provides a special message, instruction, or cryptic identification in a standard text and/or numeric format (see examples on left).

A message size is a maximum of 3 lines but cannot exceed the size of standard heads (Page 6). Letters are always upper case. 'Messages' can be one or more characters, make specific statements as "PROPERTY OF" or "FROM THE STUDIO OF....."; provide identification as "CALIFORNIA REDWOOD" or "GENUINE MAHOGANY"; or make a personalized statement.

PLEASANT VALLEY RIDING ACADEMY	AZ
STUDIO 66 VIDEO RENTALS	B 3 H
CRAFTED BY QUALITY FURNITURE	INSP.
A & R BUILDERS	86



Wallbrand™
Electric Branding Tools
Hand-held Models, 200 to 400 watts



Three "mid-range" models of branding tools are offered that provide branding temperatures from 700°F up to 1255°F depending on the size and type of the branding head used (see pages 4 and 6).

All three models are professional quality units and are identical in construction, except for the difference in wattage of the heating elements. All branding heads fit each of the three basic branding tool models. However, because each of the three models uses a different heating element, the resultant branding temperature will vary for any head size (see page 6).

OPTIONS:

1. Three branding tool sizes (models), below.
2. Branding heads, pages 4 and 6.
3. Temperature Regulator, page 3.

For semi-automated branding, see Drill Press units on page 3.

LOGO brand shown

Applications

Model WB200

200 Watts, 120 or 220 VAC

Use the Model WB200 where lower branding temperatures are required.

Depending on the branding head size, temperatures of 700°F to 920°F are possible making the WB200 suitable for continuous low-volume branding of many 'softer' materials such as leather, some rubber, plastics, and soft woods.

Although a good basic branding tool, it is not recommended for fast and repetitive production line applications as the tool's heat regenerating capability is limited for such uses. See WB300 and WB400.

Model WB300

300 Watts, 120 or 220 VAC

With branding head temperatures that are 150°F to 200°F hotter than the WB200, this model performs well in the middle temperature ranges. Harder woods and many rubber products can be branded easily.

When using *smaller* head sizes, this tool is sufficiently hot and can be used for repetitive branding situations where 8 to 12 impressions per minute are needed.

Although the tool is capable of continuous branding using *larger* head sizes, it does not have the capability to sustain rapid, repetitive branding (see WB400).

Model WB400

400 Watts, 120 or 220 VAC

This model performs in the higher temperature ranges for most head sizes. It is ideal for branding most materials including harder woods and rubber.

The WB400 provides branding temperatures from 925°F up to 1255°F depending on head size.

With few exceptions, this tool can be comfortably used for sustained branding applications requiring up to 18 impressions per minute using smaller head sizes, and 12 to 14 impressions for larger head sizes. For semi-automated branding see Drill Press units, Page 3.

Performance Features

- **Cartridge type heating element** is an effective, durable heat source.
- **Heater insulator sleeve** increases heat utilization for better branding.
- **Interchangeable branding heads** fit all three models for better user flexibility.
- **Cast bronze branding heads** are durable and provide good heat transfer.
- **Heavy-duty construction** as each tool is built for rugged use and dependable performance.
- **3-wire grounded cordset** protects against electric shock.
- **Positive grip heat resistant handle** is for user comfort and ease of handling.
- **Integral tool stand** provides safe, convenient rest for tool.

Tool Specifications

Voltage	120 or 220 VAC
Power Cord	3-conductor, 4.5 feet long
Heater Housing	Bronze
Heater Shroud	Plated Steel
Heater Insulator	Ceramic Fiber
Shaft	Stainless Steel
Handle	Turned Hardwood
Heating Element	Cartridge Type
Weight of Tool	18 oz. without head
Length of Tool	13" including head



Wallbrand™ Electric Branding Tools Drill Press Models, 200 to 400 watts



Drill Press (DP) Models

Designed for a production line environment, **Wallbrand™** DP units are ideal tools for semi-automated branding operations. These high performance tools offer a very economical solution for repetitive branding. **Wallbrand™** DP branding modules readily fit and adapt to most existing drill presses accepting 1/2" shanks. And, for tool flexibility, they are easily removed when the drill press is needed for other uses. For a tool so productive and versatile, the initial cost is modest. Three self-contained DP models that accept interchangeable branding heads are offered (Drill Press not included):

Model No.	Wattage	Voltage
WB200DP	200 watts	120 or 220 VAC
WB300DP	300 watts	120 or 220 VAC
WB400DP	400 watts	120 or 220 VAC

Applications: Capacities of DP units are the same as those for hand-held models of the same wattage as described on page 2 under Applications.

Tool Specifications

Voltage	120 or 220 VAC
Power Cord	3-conductor, insulated 1.5 feet long
Heating Element	Cartridge in Bronze housing
Heater Shroud	Plated Steel
Heater Insulator	Ceramic Fiber
Shaft and Dual Discs	Plated steel
Dual Discs	8 3/4" overall incl. head
Length	8" from chuck incl. head

A Wallbrand™ DP unit consists of the following components:

1. Rigid 1/2" diameter steel shank
2. Spring mounted, dual-disc isolating shaft assembly
3. Performance rated heating element in a heat containment shroud
4. Interchangeable branding heads - various sizes & types available
5. Grounded plug with 18" insulated cordset

Benefits of the Dual-Disc Isolating Shaft Assembly

1. This assembly protects the drill press by preventing the branding tool's heat from rising into the chuck and bearings of the drill press, which would otherwise prematurely dry out the lubricating oils in the drill press. The dual-disc provides a shield against convection currents and a barrier that prevents heat transfer through the shaft.
2. It allows for adjusting the level of the branding head to match that of the surface being branded. Thus, brands are better and more uniform.

Easy Installation

DP units are easily and quickly installed. Just insert the unit into the chuck and plug it into a grounded power outlet.



Temperature Regulator Model WBTR-3 - 120 VAC only

An optional feature, the WBTR-3 is an effective, economical heat control unit that allows more flexibility in the use of the branding tool. By adjusting the tool's temperature, a more uniform brand is possible. Overbranding or risk of damage is minimized.

WBTR-3, with a female plug, is a separate accessory. This unit plugs directly into the power supply and has a 9 ft. cordset.

WBTR-3 features include • Full range rotary control • positive ON-OFF switch • Heat dispersion protection (prevents damage to WBTR-3) • Radio-TV interference filter • Fire retardant, chemical & heat resistant thermoplastic case • 3-wire grounded unit.





Wallbrand™
Electric Branding Tools
Branding Head Options



Branding Heads for
Hand-held and Drill Press Models, 200 to 400 watts

Branding heads are cast of solid bronze for good heat retention and long life. Although many options are offered, there are two basic styles of branding heads, **LOGO brand** and **CUSTOM brand**.

Each **LOGO brand** engraved to order, reproduces the customer's stylized artwork through a three-step process. **CUSTOM brands** use only upper case Gothic style letters and numerals to present a message.

Refer to Page 6 for Branding Head Specifications

LOGO brand

A **LOGO brand** authentically reproduces a logo, signature, emblem or other personalized artwork to scale. It is made from customer supplied artwork and can be reproduced to fit on a standard size branding head.

LOGO brands are engraved on cast bronze heads. Engraving depth varies depending on the complexity of the design. All **LOGO brands** are reproduced, and are reduced in size when necessary, to fit on a standard head size (page 6).

- A **LOGO brand** exactly duplicates the artwork supplied. For best results, sharp and clearly defined artwork is essential. Always submit good reproductions or original artwork.
- Select a standard branding head size (page 6) that best suits the items to be branded. However, logos that are intricate and detailed should be reproduced as large as possible so that the details of the design will brand clearly.



CUSTOM brands

A **CUSTOM brand**, using upper case Gothic letters and numerals, can be one of two types, **Fixed Letters** or **Removable Letters**. Letters are either engraved or cast depending on the letter size wanted (refer to Letter/Numeral Spacing Specifications, on page 6).



Fixed Letters: Permanently engraved in the branding head, letter sizes offered are 1/8, 3/16, 1/4, 3/8, 1/2, 3/4, and 1 inch high. Sizes can be intermixed on a head in some cases.

Removable Letters: Letters fit into a slot(s) in the branding head and can be interchanged. Heads with one or two slots are available (pg.6). Letter sizes offered are 3/16, 1/4, 3/8, 1/2, 3/4, and 1 inch high. Some sizes can be intermixed on a head. Screw held End Locks hold letters securely in slot.

Removable Letter Fonts:

When messages require frequent changing, having a font of letters available at the worksite provides complete, time-saving flexibility. Messages can be easily removed and replaced in a matter of minutes.

Three type sizes are being offered: 3/16", 1/4", and 3/8". Packed in a compartmentalized storage box, each font consists of: 72 letters, 30 numerals, plus 13 end locks, word spacers, punctuations and ampersand. All letters are upper case Gothic style.



Part No.	Font Size
WB316F	3/16"
WB140F	1/4"
WB380F	3/8"



Wallbrand™ Electric Branding Tools Branding Head Specifications



Branding Head Options

For versatility, branding heads are replaceable so that each tool can reproduce more than one brand by changing branding heads.

A selection of standard head sizes, listed on page 7, is available for each type of branding tool so that logos or messages of various sizes can be reproduced to a customer's specific requirement.

Messages are supplied in Gothic style, upper case letters engraved in sizes 1/8" to 1".

For logos or other specially designed messages, clean and crisp original artwork must be supplied for best results.

Guide to Branding Time/Temperature

This information is to be used as a guide only and is provided for general reference as each type of material will brand differently when subjected to heat. Many factors, such as the material's age, moisture content, durometer, conditioning, etc., can influence brandability.

A combination of *branding temperature* and *dwelt time* are key factors that determine brand quality. As a 'rule of thumb', many plastics brand at 400°F - 500°F, leathers 600°F - 700°F, woods 700°F - 1000°F. and rubber from 800°F - 1200°F.

The following table shows the relationship between temperature and dwell time (in seconds) for dry Yellow Pine or Red Oak at selected branding head temperatures.

Branding Temp. °F	700	750	800	900	1000
Dwell Time (Secs.)	5	4	3	2	1

Selecting the Branding Head and Tool Model (Size)

Choose a branding head size that suits both the message and the temperature needed to brand a given material(s). Head temperatures vary according to the overall shape and size of a head. In general, a smaller and/or more uniform shape is hotter and will brand faster. Where possible, the factory will reduce the overall head size to fit a message and optimize the branding head temperatures.

To determine head size and tool model:

1. Use **L/N Specifications** below to compute the message size, thus the head size.
2. Use **Time/Temperature Guide** on Page 5 to determine the branding temperature required.
3. Use **Size/Temperature Specifications** below to select the tool size (model) required and branding head part number.

Letter/Numeral (L/N) Spacing Specifications

(All letters and numerals are upper case only.)

Size specifications below are given as a guide to determine an approximate head size for a given message by L/N size.

Each order is evaluated individually by Wall Lenk to determine the type of letters/numerals (engraved or cast) that will be used for a given message.

Spacing for Fixed Letters/Numerals

Actual height of letters/numerals	1/8"	3/16"	1/4"	3/8"	1/2"	3/4"	1"	
Allow for each line in height	3/16"	5/16"	3/8"	9/16"	3/4"	1 1/8"	1 1/2"	(includes spacing between lines)
Number of letters/numerals per inch of width	8 1/2	6	4 1/4	3	1 3/4	1 1/2	1 1/8	(includes spacing between letters)

Spacing for Removable Letters/Numerals in Slotted Heads

Use only for 200 to 400 watt models using *slotted heads*. Determine line length by computing space needed for characters (above), add 3/4" per line for End Locks (2), plus add 1/2 of a letter width for each space between words.

Branding Head Size/Temperature Specifications

Heads for WB200, WB300, WB400 and Drill Press Models

Part No.	Head Size		Head Temperatures (Note 1) (°F) at Idle		
	H x W (Inches)	Square Inches	200 watts	300 watts	400 watts

Branding heads for LOGOs, fixed letters and numerals.

BH200-1	1/2 x 3	1.50	860	1055	1165
BH200-3	7/8 x 3 1/2	3.06	815	990	1110
BH200-5	2 Dia.	3.00	920	1115	1255
BH200-6	1 1/2 x 2 1/2	3.75	850	1010	1130
BH200-8	2 x 2 1/2	5.00	815	995	1110
BH200-9	1 1/2 x 3 1/2	5.25	755	930	1055
BH200-10	2 x 3	6.00	745	940	1060

Slotted branding heads for removable letters / numerals

BH200-31	7/8 x 3 1/2	3.06	730	865	925
	1 slot for 3/16, 1/4, 3/8, 1/2 inch high letters and numerals				
BH200-62	1 1/2 x 2 1/2	3.75	780	930	1035
	2 slots for 3/16, 1/4, 3/8, 1/2 inch high letters and numerals				
BH200-91	1 1/2 x 3 1/2	5.25	710	825	930
	1 slot for 3/4 and 1 inch high letters and numerals				
BH200-92	1 1/2 x 3 1/2	5.25	700	820	930
	2 slots for 3/16, 1/4, 3/8, 1/2 inch high letters and numerals				

Model WB125 Heads

Part No.	Head Size		Temp (°F) @ Idle
	H x W (Ins)	Square Ins.	
BH125-1	3/4 x 2 3/4	2.06	825
BH125-3	1 x 2 3/4	2.75	720

(Note 1) Head temperatures have been measured, under ideal conditions, on the outer edge of the branding head and will be somewhat hotter in the center.

Actual temperatures may differ as varying local conditions (ambient temperatures, drafts and air movement, voltage variations and age of tool) will affect performance.

LIMITED WARRANTY

Wall Lenk Corporation warrants its products and accessories to be free from defective materials and workmanship for a period of ninety (90) days from date of original purchase.

This warranty does not apply to any product which has been disassembled, damaged or defaced, subjected to misuse, abnormal service and mishandling, nor any product altered, repaired, or disassembled by anyone other than Wall Lenk Corporation.

During this warranty period, Wall Lenk Corporation, at its option, may repair or replace such product at no cost to the purchaser for labor and/or materials when returned with transportation costs pre-paid to Wall Lenk Corporation, together with proof of purchase.

THIS WARRANTY IS THE ONLY WARRANTY APPLICABLE TO WALL LENK CORPORATION'S PRODUCTS AND ACCESSORIES AND IS EXPRESSLY IN LIEU OF ANY AND ALL OTHER WARRANTIES, EXPRESSED OR IMPLIED, INCLUDING ANY IMPLIED WARRANTY OF MERCHANTABILITY OR FITNESS FOR A PARTICULAR PURPOSE. WALL LENK CORPORATION SHALL NOT BE LIABLE FOR CONSEQUENTIAL OR INCIDENTAL DAMAGES RESULTING FROM BREACH OF WARRANTY. THE REMEDIES EXPRESSLY SET FORTH HEREIN ARE EXCLUSIVE AND NO OTHER REMEDY FOR BREACH OF WARRANTY EXISTS.

Wall Lenk Corporation, 2300 Highway 11 North
Kinston, North Carolina 28502



Illinois Engraving & Mfg. Co.

4530 N. Ravenswood
Chicago, IL 60640

800-528-2050
Fax: 773-728-4438